

nrgi

BESPOKE GLAZING

## Lift & Slide

Elevating Spaces with Custom Craftsmanship

[www.nrgi.ie](http://www.nrgi.ie)

Welcome to NRGi Bespoke Glazing, your local expert in crafting exceptional glazing solutions that transform spaces across Ireland. For the past decade, our dedication to craftsmanship and quality has set us apart. Each product, made by our skilled fabricators, meets the highest international standards, evidenced by our ISO 9001 certification.

We value your time, offering short lead times without compromising quality. Our commitment to excellence is matched by our dedication to you—our client. We work closely with you to ensure our products meet your unique needs and exceed your expectations.

Join us as we continue to create outstanding glazing solutions, one window and door at a time. Discover the NRGi difference and experience the transformation we bring to spaces and lives with our commitment to craftsmanship and client satisfaction.

NRGi Bespoke Glazing, with its origins in Wexford, Ireland, has a rich history of crafting top-quality windows and doors known for their exceptional workmanship. Building upon this strong foundation, NRGi has emerged as a prominent player in the residential aluminium windows and doors market throughout Ireland.

As the market landscape evolved, accompanied by changing regulations and rising expectations, NRGi has remained committed to continuous improvement. This dedication extends to expanding their product range to encompass efficient and energy-saving solutions that not only meet but exceed future statutory requirements. Importantly, this commitment to innovation doesn't compromise on the essential factors of security, comfort, and functionality.

For more detailed information about the wide array of windows and doors offered by NRGi, I encourage you to explore their website at [www.nrgi.ie](http://www.nrgi.ie). There, you'll find comprehensive details about their products and how they can enhance your home.



## Lift and Slide Door System Features:

- Thermal Insulation: Superior insulation with a Uw rating as low as 0.9 W/m<sup>2</sup>K ensures energy efficiency.
- Design Options: Choose from a standard 110mm section or a sleek minimalist 50mm solution at the central sash encounter.
- Size and Luminosity: Large sash dimensions available, ideal for enclosing vast spaces while maximizing natural light.
- Smooth Operation: Despite its robust appearance, the system provides an ultra-smooth opening experience with perfect sash sliding on a durable stainless steel rail.



## Technical Specifications:

- Maximum Glazing Thickness: 55mm
- Opening Configurations: Options include 2, 3, 4, & 6 sashes with configurations of 1 rail (1 sash + 1 fixed light) and up to 3 rails.
- Profile Dimensions: Mono & Dual Frame: 160.6mm, Triple Rail: 251mm, Sash: 70mm.
- Profile Thickness: Door profile at 2.0mm.
- Polyamide Strip Length: Frame at 35mm; Sash at 24mm.
- Maximum Sash Dimensions\*\*: Up to 3,300mm in width and height.
- Maximum Sash Weight: Up to 400kg.

## Customisation & Finishes:

- Color Options: Dual-colour systems, and a variety of powder coatings including RAL colors, Matt, Textured, and wood effects.
- Special Coating: Anti-bacterial and anodised options available for enhanced durability and hygiene.

*\*\*Note: For variations in maximum weight and dimensions based on different opening types, please consult with us for details.*

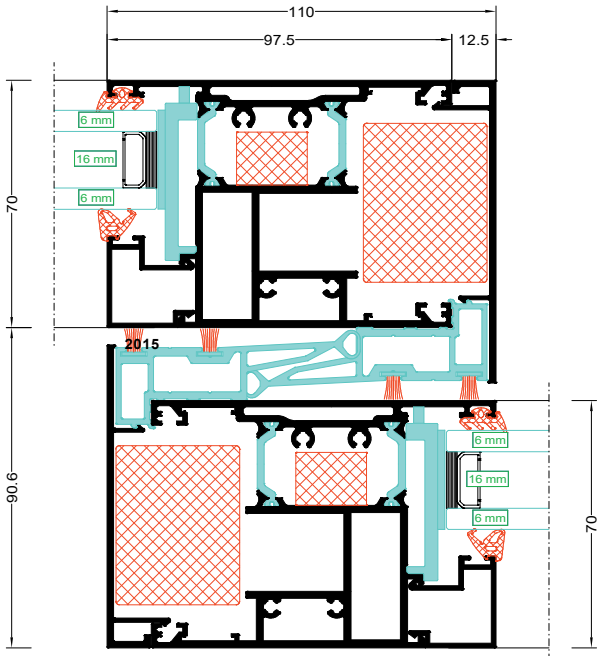




# Standard 110mm Interlock Option:

**Availability:** Compatible with all configurations, essential for triple rail doors and projects in highly exposed areas.

**Performance:** Offers exceptional resistance to water and wind, making it ideal for locations with high window loads.



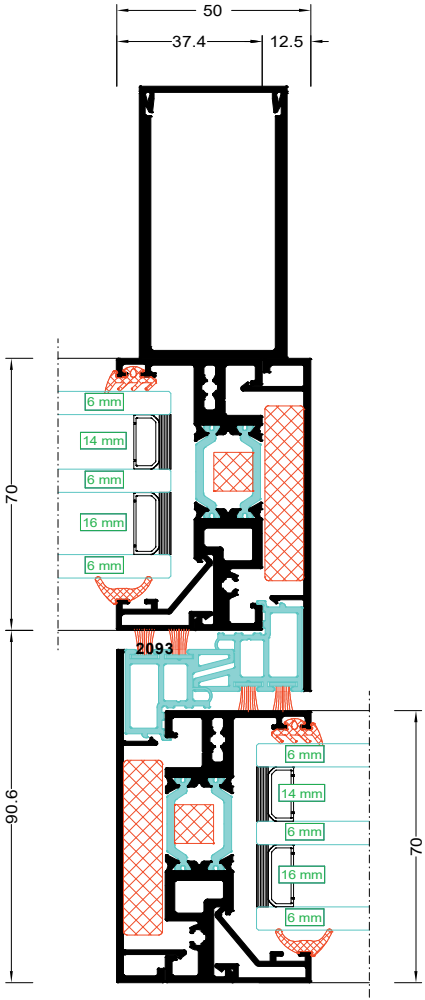




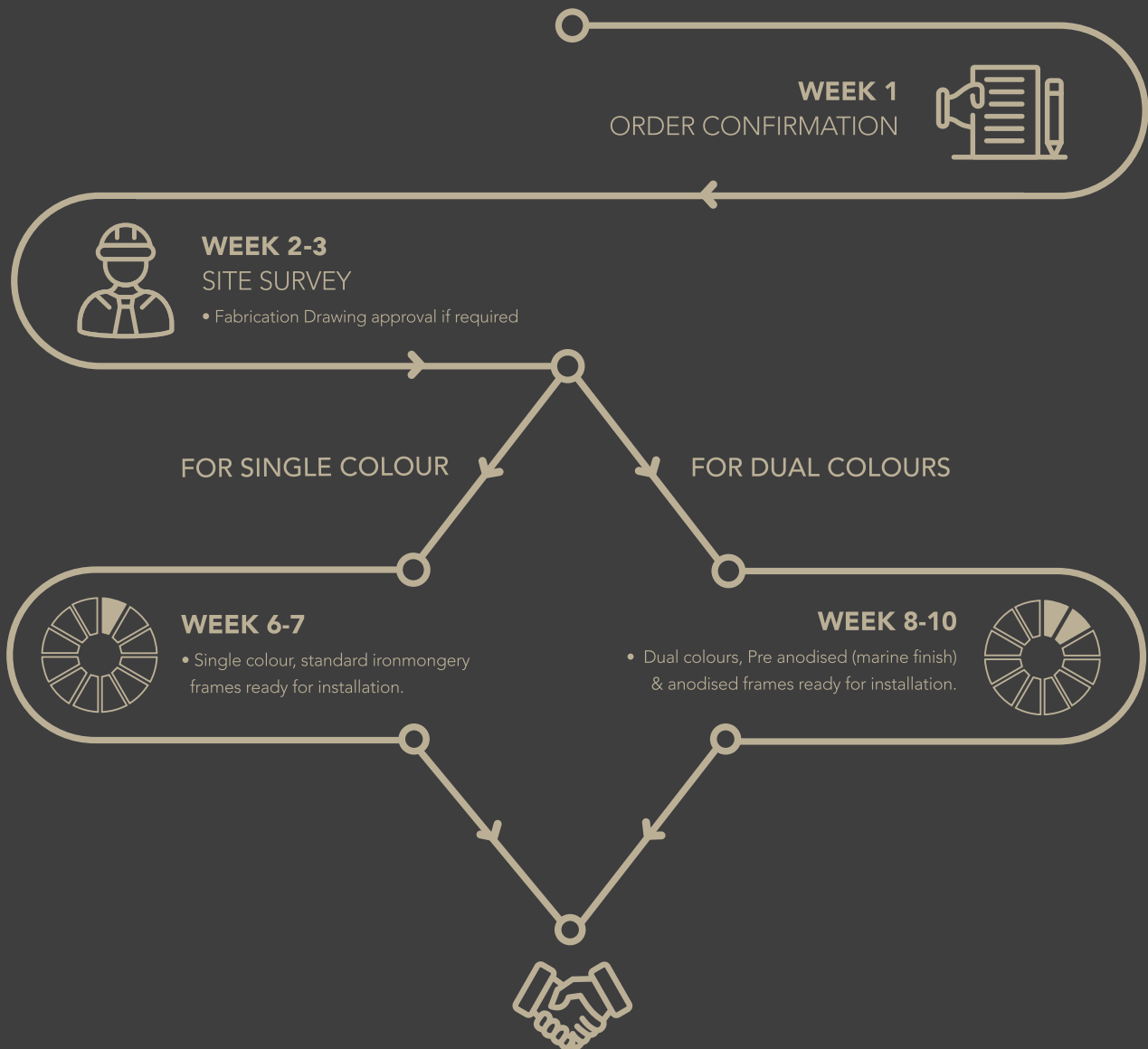
# Slim 50mm Interlock Option:

**Availability:** Suitable for Monorail (1 Rail) and Dual Rail (2 Rails) configurations with a height under 2.8m.

**Design:** Features a sleek, minimalist 50 mm profile at the central sash, designed to maximize the glazed area for enhanced visual appeal.



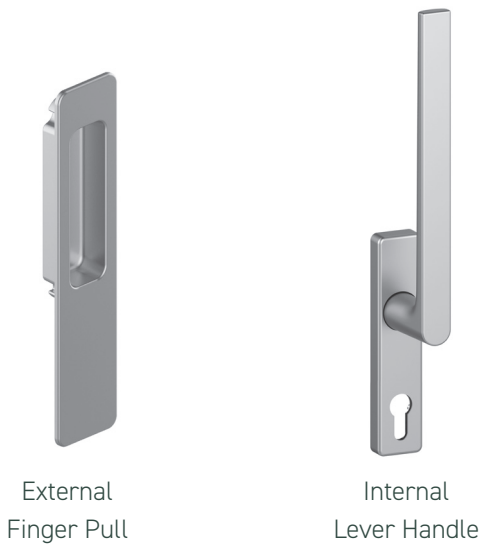
## Time frames:



*\*If a site survey for all positions cannot be conducted in week 2-3 or fabrication sizes cannot be agreed upon this will result in a rescheduling of the fabrication resulting in an extended time-frame to the above.*

## Lift & Slide Handles

All our handles come in Satin Silver, Anthracite Grey or Jet Black as standard. Custom RAL's are available where a minimum order quantity and set up charge apply. We can also offer different style handle depending on the clients needs. Our standard setup features a lever handle on the inside and a finger pull on the outside. The finger pull is designed solely for moving the door leaf. If you need to lock or unlock the door from the outside, a lever handle is required. For larger doors weighing 200kg or more, we recommend using a lever handle on the outside as well, to facilitate smoother sliding of the door.



## Durability tests

All our windows are tested for durability:



Air permeability  
**600Pa**



Wind resistance  
**2400Pa**



Water tightness  
**1050Pa**



Operation  
**20,000 cycles**



## FAQ's:

### 1. What are lift and slide doors?

Lift and slide doors are a type of sliding door system where the door panel lifts slightly off the track to move and lowers back to create a seal when closed.

### 2. How do lift and slide doors work?

These doors operate on a mechanism that allows the door sash to lift from a closed position (sealed and weatherproof) to an open position (where it can slide easily) with a simple turn of a handle.

### 3. How are lift and slide doors different from regular sliding doors?

Unlike regular sliding doors, lift and slide doors offer a tighter seal when closed due to the lifting mechanism, which improves insulation, security and reduces maintenance requirements.

### 4. What are the advantages of using aluminium for lift and slide doors?

Aluminium is durable, resistant to weathering, and requires minimal maintenance. It also allows for slim profiles and larger glass panes, maximizing views and natural light.

### 5. Can aluminium lift and slide doors be customised?

Absolutely. These doors can be customised in various finishes, colours, and sizes. Glazing options, such as double or triple glazing, and handle styles can also be tailored to enhance thermal properties and aesthetic appeal.

### 6. How secure are aluminium lift and slide doors?

Aluminium lift and slide doors are very secure. They are equipped with advanced locking systems that engage multiple points around the frame.

### 7. What kind of maintenance do aluminium lift and slide doors require?

Maintenance is relatively low, it involves regular cleaning of the tracks, checking the seals and hardware for wear and tear, and ensuring the smooth operation of the lifting mechanism.

### 8. Are aluminium lift and slide doors energy efficient?

Yes, when equipped with appropriate glazing options, aluminium lift and slide doors offer excellent thermal insulation, helping to reduce heating and cooling costs.

### 9. What is the typical thickness of the glazing used in aluminium lift and slide doors?

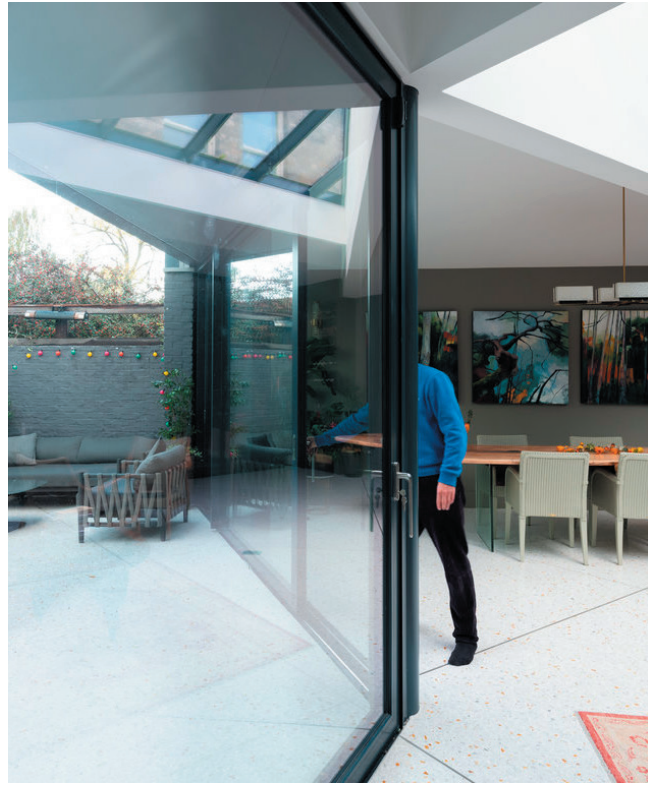
The glazing can vary, typically ranging from double glazed units around 24mm to triple glazed units up to 55mm, depending on energy performance requirements.


### 10. How do aluminium lift and slide doors compare to those made from other materials?

Compared to wooden or uPVC doors, aluminium doors provide a more robust and long-lasting solution with less frame and more glass, offering better views and higher durability.

### 11. Can you have aluminium lift and slide doors with a level threshold?

Yes, you can have a level threshold with aluminium lift and slide doors. A level threshold means that there is minimal or no step between the inside floor level and the outside, which not only provides a seamless transition between indoor and outdoor spaces but also enhances accessibility.





NRGI Bespoke Glazing, with its origins in Wexford, Ireland, has a rich history of crafting top-quality windows and doors known for their exceptional workmanship. Building upon this strong foundation, NRGI has emerged as a prominent player in the residential aluminium windows and doors market throughout Ireland.

As the market landscape evolved, accompanied by changing regulations and rising expectations, NRGI has remained committed to continuous improvement. This dedication extends to expanding their product range to encompass efficient and energy-saving solutions that not only meet but exceed future statutory requirements. Importantly, this commitment to innovation doesn't compromise on the essential factors of security, comfort, and functionality.

For more detailed information about the wide array of windows and doors offered by NRGI, I encourage you to explore their website at [www.nrgi.ie](http://www.nrgi.ie). There, you'll find comprehensive details about their products and how they can enhance your home.

**Contact us for a free consultation**

Email: [info@nrgi.ie](mailto:info@nrgi.ie)

T: +353 (0)87 366 2991

T: +353 (0)1 667 6557

[www.nrgi.ie](http://www.nrgi.ie)

**nrgi** BESPOKE GLAZING